



Knowle
West
Media
Centre



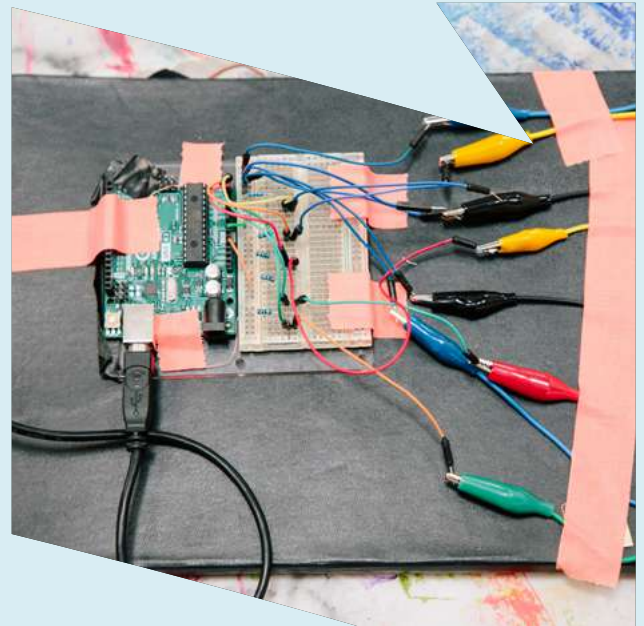
Credit: Ibi Feher

APRIL 2024 - MARCH 2025

Annual Report: 2024/25

Introduction

The past year has been one of creativity, collaboration and exciting change at Knowle West Media Centre. From digital innovation and community storytelling to skills development and sustainable making, people of all ages have come together to learn, share and shape ideas for fairer futures. Across our spaces and partnerships, we've continued to demonstrate the power of arts, technology and care to create lasting change and a more confident, creative and connected Knowle West.



Credit: Ibi Feher



Credit: Bhagesh Sachania

290

SESSIONS

8820

ATTENDANCES

4452

VISITORS

20

VOLUNTEERS

18

ARTISTS

Our Team

A new co-director leadership model has been in place since October 2024. The whole KWMC team and trustees worked with Practical Governance Collective to establish this co-director model. We are now looking to go further towards distributed models of leadership - ensuring staff and community can participate in decision-making at all levels of the organisation.



Foundations For The Future

After our founder Carolyn Hassan retired, we worked with her to curate a year-long exhibition 'Foundations for the Future' which launched in January 2025. The exhibition celebrates nearly thirty years of KWMC, exploring how ideas have grown and the differences we have made together.

Through the exhibition we remember the social, political, environmental and economic backdrops that shaped our work, reflecting on the challenges faced and the insights found. We see our history as 'usable past', providing rich foundations for KWMC's growth into the future.



Credit: Ibi Feher

The exhibition is organised around our four main areas of work:

INSPIRING CREATIVITY AND LEARNING

Engaging and inspiring communities of all ages through accessible creative activities and programmes using digital arts that build learning, skills development, and problem-solving beyond traditional education and training systems.



Credit: Ibi Feher

DIGITAL TECH FOR ALL

Promoting the development of creative digital skills and critical capacities. Enhancing employability and growing confidence for those most marginalised to take the lead in tech development and innovation. Creatively exploring how technologies and data influence everyday life.



Credit: Ibi Feher

COMMUNITY STORYMAKING & CULTURAL PLACEMAKING

Activating community-led story making and cultural placemaking through arts. Changing perceptions of Knowle West - centring people's lived experiences and aspirations, celebrating the richness of social bonds, local knowledge, culture and heritage.



Credit: KWMC

MAKING FOR REAL

Transforming ideas into tangible demonstrations of change by delivering programmes that span digital design, fabrication, and real-world construction.



Credit: Ibi Feher

The projects that follow are also grouped based on these four themes.

Inspiring Creativity And Learning

We have continued growing talent, confidence and collaboration through creative programmes for young people, adults and artists. From after-school sessions and family workshops to artist residencies and adult learning, people of all ages and backgrounds have explored new technologies, expressed ideas and developed the skills to shape their futures and communities.



Young People's Programme

192

SESSIONS

2495

ATTENDANCES

376

PEOPLE ENGAGED

This year, young people have continued to shape and inspire everything we do at KWMC. Through after-school clubs, family events, creative workshops and youth-led projects, we've supported them to explore ideas, develop skills and make their voices heard.

We delivered two family days, including a nature-themed collaboration with Broadmeadow artists Charli Clark and Sylvia Rimat, and a Community Feast during half term which welcomed several families new to KWMC.

Our regular after-school sessions, Creative Hub, Maker City, SoundWave and SoundWave+, continued to grow and we launched Creative Hub+, a new space for 14-17-year-olds to lead their own cross-disciplinary projects.

Our new Radical Creators programme supported young people to design campaigns about the issues that matter to them, from knife crime to climate action. With support from Bloomberg via the Centre for Sustainable Energy, Radical Creators: Climate explored event design and production through a six-week paid skills programme.



Credit: KWMC



Credit: KWMC

We ran our biggest Maker City Work Experience to date this year. After choosing from over 150 applicants, we welcomed 25 students for two weeks of hands-on challenges with partners including Arup, Arcadis and Mott MacDonald. They co-designed ideas for the redevelopment of Filwood Community Centre, working with architects and Bristol City Council's Levelling Up team. Designs from which will feature in the new community centre.



We also hosted our first Youth CoLab session to gather young people's views on KWMC's future, collaborated with local youth groups Youth Moves and One Love Hub, and celebrated creativity at our annual youth-led SoundWave Festival, which featured 25 performers and over 150 attendees.

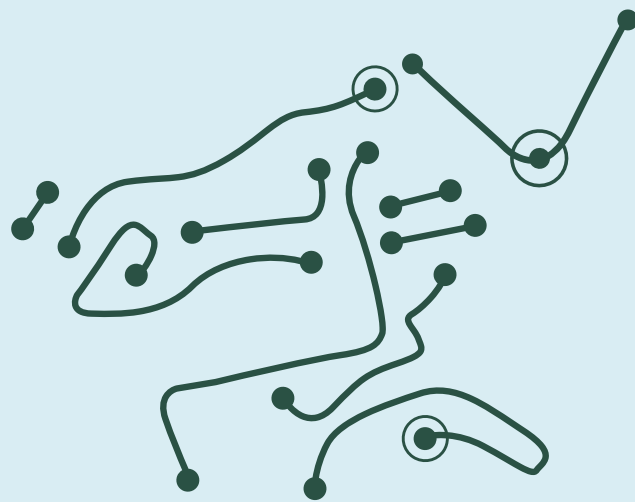


This year, four young people submitted work to UCL's 'Making Good International Prize', with one receiving a Highly Commended mention and publishing an article in a local magazine, a great example of youth voice reaching beyond KWMC.

Find out more about our Young Peoples Programme: kwmc.org.uk/youngpeople

Adult Learning

This year, our Creative Cuppa weekly drop-in continued to offer a welcoming, accessible space for people to experiment and get hands-on with our digital tech, arts and making programmes - helping to reduce barriers that often prevent participation. Read more on page 11.



Credit: KWMC

Artist Development

This year, we continued to support artists to grow their socially engaged and digital arts practices through residencies, commissions, seed funding and inspire trips. At our neighbourhood makerspace, The Factory, artists and makers had access to tools and skills support to design, prototype and collaborate.

Highlights included a public art residency with Myah Asha Jeffers, a MyWorld fellowship with David Matunda, and the launch of Filwood in Motion: a year of collective making and street action led by artists-in-residence Rachael Clerke and Linzy Na Nakorn, as part of the £30 million Filwood Broadway regeneration.

Digital Tech for All

Through artist-led workshops, community drop-ins and collaborative projects, we've supported people to experiment with digital tools, build skills, and design technology that responds directly to real community needs.



Creative Cuppa

Our weekly Creative Cuppa continued to offer a welcoming space for people to experiment with creative technology and making, reducing barriers to participation.

Guest artists led playful workshops that sparked conversation about how technology shapes our lives, including weaving binary messages with Wisterlitz, creating sound-making pompoms with PRRRRRT!, and making their own digital games with V Buckenham.



Hear reflections from participants about how Creative Cuppa has impacted their lives:

tinyurl.com/creative-cuppa-2024



Digital Inclusion

We hosted Tea and Tech sessions with Improving Lives of Older People, supporting residents to get comfortable using digital devices. We also hosted Creative Data Skills workshops with the University of Bristol's Equitable Privacy team, leading to five Digital Privacy Clinics offering practical advice for our communities to protect themselves online.

In addition, we supported three 'Cognition' workshops, led by University of Bristol researchers and artists, where communities were able to test and feedback on a prototype VR experience designed for visually impaired people.



Read the full blog about Cognition:
kwmc.org.uk/blog/cognition

Community Tech and Innovation

Through the Caring Futures project with the Centre for Sociodigital Futures, young people explored the ethics of AI and data privacy with artists and researchers. We hosted Inspire events, including a talk with photographer Kirsty Mackay and a community workshop sharing 'Understory', a tool for mapping community stories created by Free Ice Cream and Onion Collective.

Our 'What If...?' showcase brought together community tech pioneers from Bristol to Brazil. The night celebrated community tech through interactive demos, talks, and a cosy interactive library of tech-inspired stories.

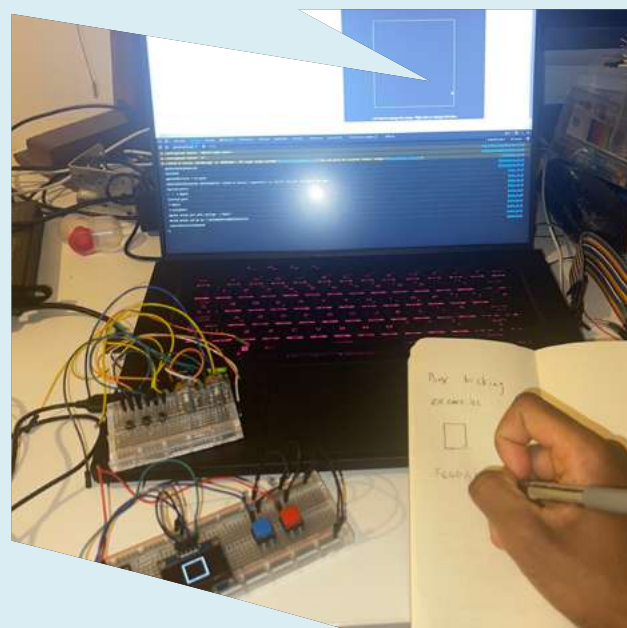


Read the full blog:
kwmc.org.uk/blog/what-if



We supported David Matunda through a MyWorld Fellowship from November 2023 to September 2024. In his blog summarising the project, David said "The KWMC fellowship has been a transformative experience for my practice and I am eternally grateful to have met and worked with all the talented and driven people as a result of it."

Read the full blog:
kwmc.org.uk/blog/david-matunda-fellowship



In early 2025, KWMC teamed up with WeCanMake and We Are More to support four local innovation teams - Mechanical, Nature Nurture, ReMake and Lend and Tend - to co-create digital tools for connecting people with nature in Knowle west as part of the 'Design to Deliver' project. Working with community members, Hive IT, Springfield Community Allotments, and artist Kaajal Modi, we co-created new prototypes and tools for nature-based solutions, showing how communities can design tech that reflects their own values and priorities.

Read more:

kwmc.org.uk/blog/design-to-deliver



Credit: Ibi Feher



Credit: Ibi Feher



Credit: Ibi Feher



Credit: Ibi Feher



Credit: Ibi Feher

Community Storymaking & Cultural Placemaking

Through cultural events, commissions and partnerships, we created spaces for people who may not usually engage with the arts to come together, share experiences, and shape the cultural life of their neighbourhood. This work ensures that Knowle West's stories are told by those who live them, changing perceptions of the area from within and beyond.



Storymaking

Storymaking has been a key focus this year, with paid commissions putting creative and digital tools directly in the hands of local people.

A highlight was the Sharing Stories exhibitions, developed through 20 community workshops with Filwood Community Centre and Acta Community Theatre. Exhibitions at Bedminster Library and Filwood Library celebrated local voices through storytelling displays co-designed with emerging designers and paid young people at The Factory. Following strong engagement, both exhibitions were extended until October 2025.



Watch a film we made about the exhibition:
tinyurl.com/sharing-stories-exhibition

Another highlight of this year included a public art residency with artist Myah Asha Jeffers who collaborated with ten global majority women from the local community to reimagine notions of 'home' and 'belonging' through the lens of migration. Together they created self-portrait cyanotypes, a tapestry, and audio capturing their stories.

Blueprinting Futures audio created with sound artist Rowan Bishop:
tinyurl.com/blueprinting-futures





We also commissioned 'Foot in the Door' a short documentary by a local filmmaker exploring how KWMC's early paid opportunities opened doors for emerging creatives in the film industry.

Watch 'Foot in the Door':
tinyurl.com/kwmc-documentary

Two new SoundWave case studies also shared young people's experiences in their own words:

Arlo: tinyurl.com/arlo-soundwave
Maci: tinyurl.com/maci-soundwave

Our Foundations for the Future exhibition showcases KWMC's own story through film stations, interactive audio boxes, writing and photography, preserving our nearly 30-year history for future generations. Read more on page 4.

Public Art

We were proud that this year we became the lead public art producers for Filwood's Levelling Up programme. Community involvement was embedded at every stage, with residents contributing ideas to the artists brief and being part of selecting the artists for an ambitious yearlong residency on the Broadway through 2025

Following the sad closure of Re:Work, the selected artists, Linzy Na Nakorn and Rachael Clerke, temporarily transformed one of its former offices on Filwood Broadway into a new community art space, becoming the base for collective making for the spring and summer.



Credit: Ibi Fehrer



Connecting People

As lead producers for Knowle West Fest 2024, we brought together over 1,000 residents for a joyful celebration of local creativity, including DJ performances from our SoundWave participants. Feedback showed:

92%

FELT PROUD TO BE PART OF THE COMMUNITY

80%

FELT WELL SUPPORTED TO TAKE PART IN ARTS AND CULTURAL ACTIVITIES

86%

FELT MORE CONFIDENT PARTICIPATING IN CREATIVE ACTIVITY

83%

FELT INSPIRED

88%

FELT MORE CONNECTED TO THEIR COMMUNITY

We also collaborated with local partners to deliver creative activities at Knowle West Health Park's Family Fun Day and a Community Festival at KWMC celebrating local social action.



Making for Real

Through Making for Real, we continue to demonstrate what's possible when communities have the tools, space and support to shape their own environments. This creates visible, hopeful change at a street, neighbourhood and city level.



We Can Make

WeCanMake, established as a subsidiary CIC of KWMC in 2020, is a community land trust pioneering new ways to create homes in ways that build community wealth, social infrastructure and a just transition. This year, WeCanMake took key steps towards full independence, setting up its own financial and governance systems while maintaining a strong, creative partnership with KWMC.

In 2024/25, WeCanMake designed and fabricated the Front Garden Retrofit Kit at The Factory, launching it at Knowle West Fest and Timber Fest. The kits are now installed in over 100 gardens and public spaces across the UK.

Through its Small Sites Programme, WeCanMake worked with residents in Hengrove to reimagine a former garage site on Rodfords Mead, exploring affordable homes and neighbourhood infrastructure for the community. A summer and autumn engagement programme included hands-on co-design sessions, a lively 'pizza and co-design party', and the Rodford Dreams community day.



WeCanMake also contributed to national conversations on housing and regeneration, speaking at the Community Land Trust Network Conference, Stir to Action, the Right to Build Taskforce and the Academy of Urbanism. A new mural by Yoli-Ward Streeter now marks the Rodfords Mead site, while monthly creative meetups at The Factory continue to connect artists, residents and peers to explore regenerative neighbourhoods.

A key collaboration between KWMC and WeCanMake in 2024/25 was Retrofit Street: bringing together communities, artists, local government, businesses and researchers to co-develop people-led and place-led retrofit, including a demonstration street in Bristol. This has included being part of the 'Retrofit Reimagined' network of community innovators across the UK. WeCanMake also joined KWMC's Maker City to deliver hands-on fabrication and sustainable design workshops in schools, colleges and careers fairs engaging over 550 students.

Find out more about WeCanMake:
wecanmake.org

The Factory: Neighbourhood Makerspace

At The Factory, KWMC launched DIY Trade Schools with WeCanMake - practical, creative workshops that built confidence with tools, making and repair. Each workshop offered a chance to learn something new in a friendly and supportive environment, meet neighbours and share food.

Trade Schools were designed for total beginners, offering an open, welcoming space for anyone who might not usually take part in DIY or creative activity. We particularly focused on accessibility for women, people of colour, working-class communities, LGBTQIA+ people, neurodivergent and disabled people, and those out of work.



Find out more about The Factory:
kwmc.org.uk/makerspace



Knowle West Alliance

Knowle West Alliance brings together residents and local organisations to create positive change in the neighbourhood. Originally founded by Filwood Community Centre, The Park, Re:work, Knowle West Health Park and Knowle West Media Centre, the Alliance now connects with many more groups and individuals across the estate.

This year, around 40 local organisations engaged through the Alliance's programmes. The Alliance's Working Group met regularly to guide activity, while networks for food and equalities continued to grow - bringing residents and organisations together to share ideas and drive collective action.

The Alliance's community grants programme saw over £30,000 distributed to local initiatives - from seed funding for the Pollinator Pathways project (featured by the BBC and The Guardian) to small grants supporting groups like Mendip Boardwalk Girls Football Team and Butterworth Court Residents.



More than 100 residents joined the Alliance's free training sessions on topics such as fundraising and trauma-informed practice, strengthening community skills and confidence. Together, we co-produced three editions of The Knowledge magazine, maintained our community website, and grew our Facebook community to over 4,000 residents.

"I thought the training was exceptional and really warming. My big takeaway was the power of people and making connections and the positivity that exists within Knowle West. People love living here, and they make the community what it is." - Amy, Bristol Refugee Festival.

Find out more about Knowle West Alliance: knowlewestalliance.co.uk



Wider Capacity Building and Sharing

As Bristol's Living Lab and an active member of the European Network of Living Labs (ENoLL), we continue to share our work across arts, research and innovation networks locally, nationally and internationally. This positions Knowle West as a hub for impactful experimentation and collaboration while demonstrating the value of community-led arts practice across multiple contexts.

Locally, we play active roles in the DIY Arts Network, the Bristol City Council Culture Board, and Knowle West Alliance working groups. We hosted the Bristol City Council Urbanism Award, welcomed MP Karin

Smyth on a tour, and shared our work with partners including the NESTA Sustainable Futures team. Our team also presented at leading events including Stir to Action Festival, the Comino Foundation Gathering, and the Community Tech Network.

Internationally, we contributed to the ENoLL Open Living Lab Days in Romania, hosting workshops and talks, and later welcomed international artists for an ENoLL Deep Dive training at KWMC about how to work with arts in Living Labs. We shared our Greengage citizen observatories approach at the Nordic Environmental Social Science Conference, delivered a masterclass at the GW4 Crucible Symposium, and took part in collaborative exchanges with academic and community partners including Policy Lab and Watershed.



Looking forward

Now more than ever, we need safe places in neighbourhoods where people can come together, connect and be creative. We need powerful new stories and demonstrators of futures where everyone belongs. We are dedicated to continuing to be a place that welcomes all, especially those most marginalised by society, that provides a place of hope and solidarity. We will continue to create opportunities for people to grow their creativity and capacity to be the changemakers of tomorrow.

Our programme for 2025/26 continues to mix our communities' amazing people-powered creativity with incredible artists to co-create bold projects that bring us together, imagine new futures and create real change.

Since adopting our co-leadership model in October 2024, we've focused on strengthening our business model and income streams to ensure a sustainable future for KWMC. This work continues into 2026, alongside our commitment to a culture of care, transparency and shared decision-making.



We believe that collaboration is essential to create more hopeful, equitable futures and address systemic inequities. We're excited to continue building partnerships and growing ecosystems for change: locally through Knowle West Alliance, across the city with multiple cultural, research, social and environmental action partners, nationally with communities of practice like Retrofit Reimagined and the Co-Creating Change Network, and internationally through the European Network of Living Labs.

Together we can dream and make fairer futures - for real.

Martha King (Creative Co-Director) & Tom Newman (Co-Director: Business Development and Operations), October 2025.



Finance Overview

2024-25 was a challenging year financially, shaped by a competitive fundraising environment and organisational restructuring following the retirement of our founder and Chief Executive in March 2024. KWMC recorded a deficit on unrestricted funds of £79,326, which was met from reserves, reducing them from £251,429 to £172,103.

Restructuring costs included £26,818 in redundancy payments, and fundraising capacity was reduced for part of the year during recruitment for the second Co-Director role.

Compared to 2023/24, total income increased by 20% to £1,910,967. However, a significant proportion of this income was received late in the financial year, and grant funding of £480,590 was carried forward to 2025/26. Expenditure decreased slightly to £1,804,151, down 3% on 2023/24, due to a slight contraction of both charitable and trading activities.

Since the introduction of the new co-leadership model in October 2024, the focus has been on strengthening financial sustainability - developing new income streams, reducing costs, and consolidating around KWMC's core mission. This will remain a key priority for 2025/26.

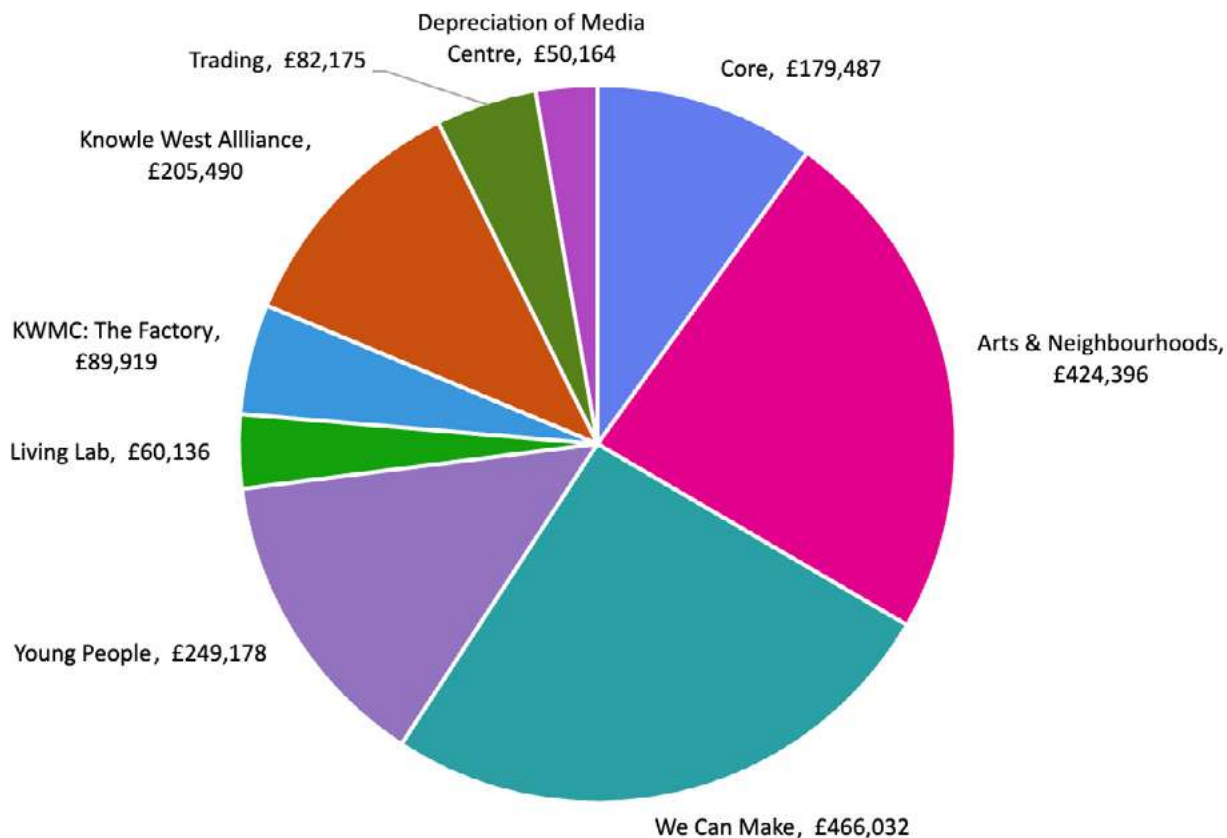


Consolidated Statement of Financial Activities [including Income and Expenditure Account] for the year ended 31 March 2025

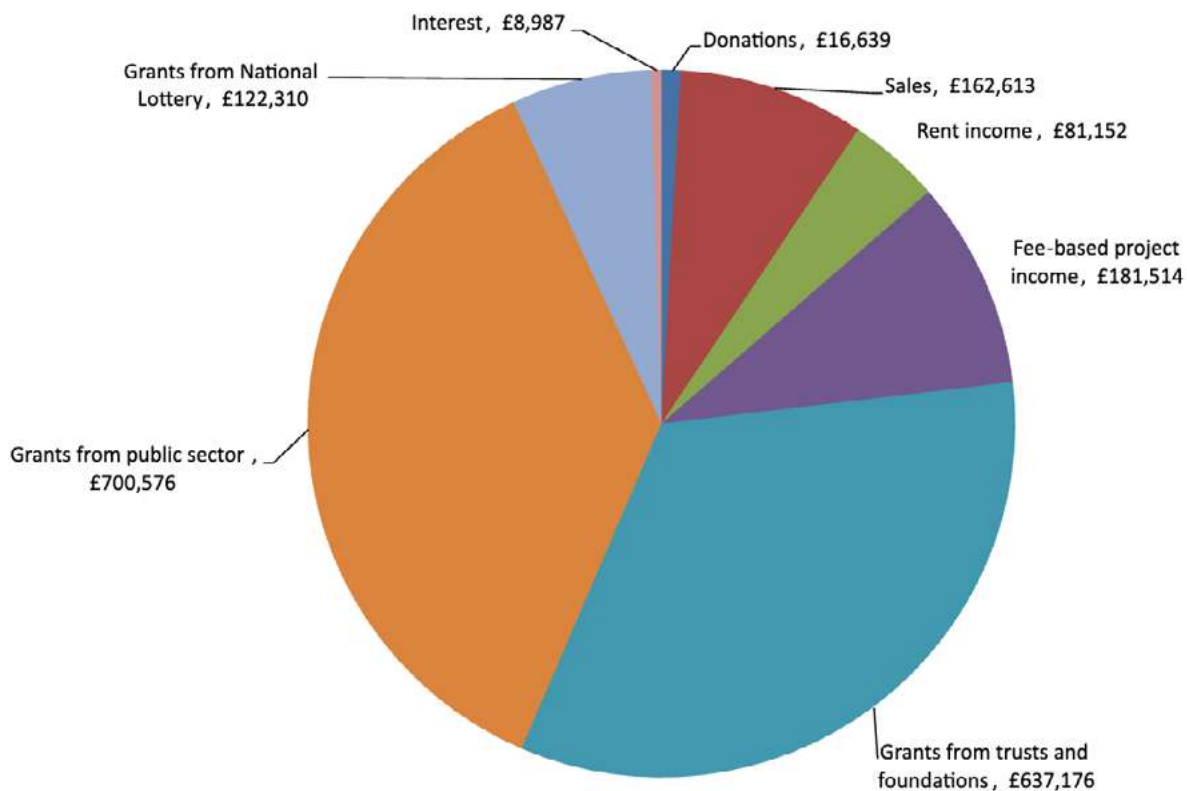
	Unrestricted funds 2025 £	Restricted funds 2025 £	Total funds 2025 £	2024 £
INCOME from:				
Donations & legacies				
Donations	2,268	14,371	16,639	11,415
Other trading activities				
Sales	162,613	-	162,613	95,764
Rent income	81,152	-	81,152	78,516
Charitable activities				
Grants and contracts	181,514	1,460,062	1,641,576	1,399,688
Investment income				
Interest receivable	8,987	-	8,987	9,220
Total income	436,534	1,474,433	1,910,967	1,594,603
EXPENDITURE on:				
Fundraising	25,535	-	25,535	25,914
Trading	80,377	-	80,377	107,281
Charitable activities	388,491	1,233,736	1,622,227	1,663,663
Governance costs	25,848	-	25,848	21,407
Depreciation of building	-	50,164	50,164	50,164
Total expenditure	520,251	1,283,900	1,804,151	1,868,429
Net incoming (outgoing) resources before tax	(83,717)	190,533	106,816	(273,826)
Corporation Tax payable	3,157	-	3,157	3,147
Net incoming (outgoing) resources before transfers	(86,874)	190,533	103,659	(276,973)
Reconciliation of funds				
Transfers between funds	2,350	-2,350	-	-
Net movement in funds	(84,524)	188,183	103,659	(276,973)
Total funds brought forward	438,561	2,109,316	2,547,877	2,824,850
Total funds carried forward	354,037	2,297,499	2,651,536	2,547,877

All of the above results are derived from continuing activities. There were no other recognised gains or losses other than those stated above.

Expenditure by programme



Income by source 2024/25



Balance sheet as at 31 March 2025

	2025 £	2024 £
Fixed assets		
Tangible assets	2,132,143	2,204,327
Long-term investments	50	50
Current assets		
Debtors and prepayments	223,568	378,935
Stock	1,144	1,513
Cash at bank and in hand	597,212	384,764
	821,924	765,212
Current liabilities		
Creditors: amounts falling due within 12 months	(172,029)	(294,216)
Net current assets	649,895	470,996
Creditors: Amounts falling due after more than one year	(130,553)	(127,496)
Net assets	2,651,535	2,547,877
Funds		
Unrestricted funds		
General fund	172,103	251,429
Designated funds	181,933	187,132
	354,036	438,561
Restricted funds		
Project grants	480,590	226,931
Depreciation reserve	1,816,909	1,882,385
Restricted funds	2,297,499	2,109,316
Total funds	2,651,535	2,547,877

Special thanks to support from



Supported using public funding by
**ARTS COUNCIL
ENGLAND**



As a charity, we always welcome donations, new collaborators and funders. If you're interested in working with us to shape fairer futures through arts, tech and care, we'd love to connect:

kwmc.org.uk/support-us

enquiries@kwmc.org.uk



enquiries@kwmc.org.uk
0117 9030 444
[@knowlewestmedia](https://www.instagram.com/knowlewestmedia)